

CORRECTION

Open Access



Correction to: Three-Dimensional Quantification of Spheroid Degradation-Dependent Invasion and Invadopodia Formation

Cameron Goertzen¹, Denise Eymael¹ and Marco Magalhaes^{1,2,3*}

Correction to: *Biological Procedures Online* (2018) 20:20
<https://doi.org/10.1186/s12575-018-0085-6>

It has come to the authors' attention that the representative image of the unstimulated UMSCC1 spheroid at Day 1 in Fig. 1a was selected from the wrong data set. The image in the original article [1] was taken from a data set for another study by the authors [2]. The revised Fig. 1 including a representative image of the unstimulated UMSCC1 spheroid at Day 1 taken from the correct study data set is available in this erratum.

Author details

¹Cancer Invasion and Metastasis Laboratory, Faculty of Dentistry, University of Toronto, Toronto, Canada. ²Oral Pathology and Oral Medicine, Faculty of Dentistry, University of Toronto, 124 Edward Street, room 495, Toronto, ON M5G1G6, Canada. ³Sunnybrook Health Sciences Centre, Toronto, ON, Canada.

Published online: 21 May 2019

References

1. Goertzen C, et al. Three-Dimensional Quantification of Spheroid Degradation-Dependent Invasion and Invadopodia Formation. *Biol Proced Online*. 2018;20(1):20. <https://doi.org/10.1186/s12575-018-0085-6>.
2. Goertzen C, et al. Oral inflammation promotes oral squamous cell carcinoma invasion. *Oncotarget*. 2018;9(49):29047. <https://doi.org/10.18632/oncotarget.25540>.

* Correspondence: marco.magalhaes@utoronto.ca

¹Cancer Invasion and Metastasis Laboratory, Faculty of Dentistry, University of Toronto, Toronto, Canada

²Oral Pathology and Oral Medicine, Faculty of Dentistry, University of Toronto, 124 Edward Street, room 495, Toronto, ON M5G1G6, Canada

Full list of author information is available at the end of the article



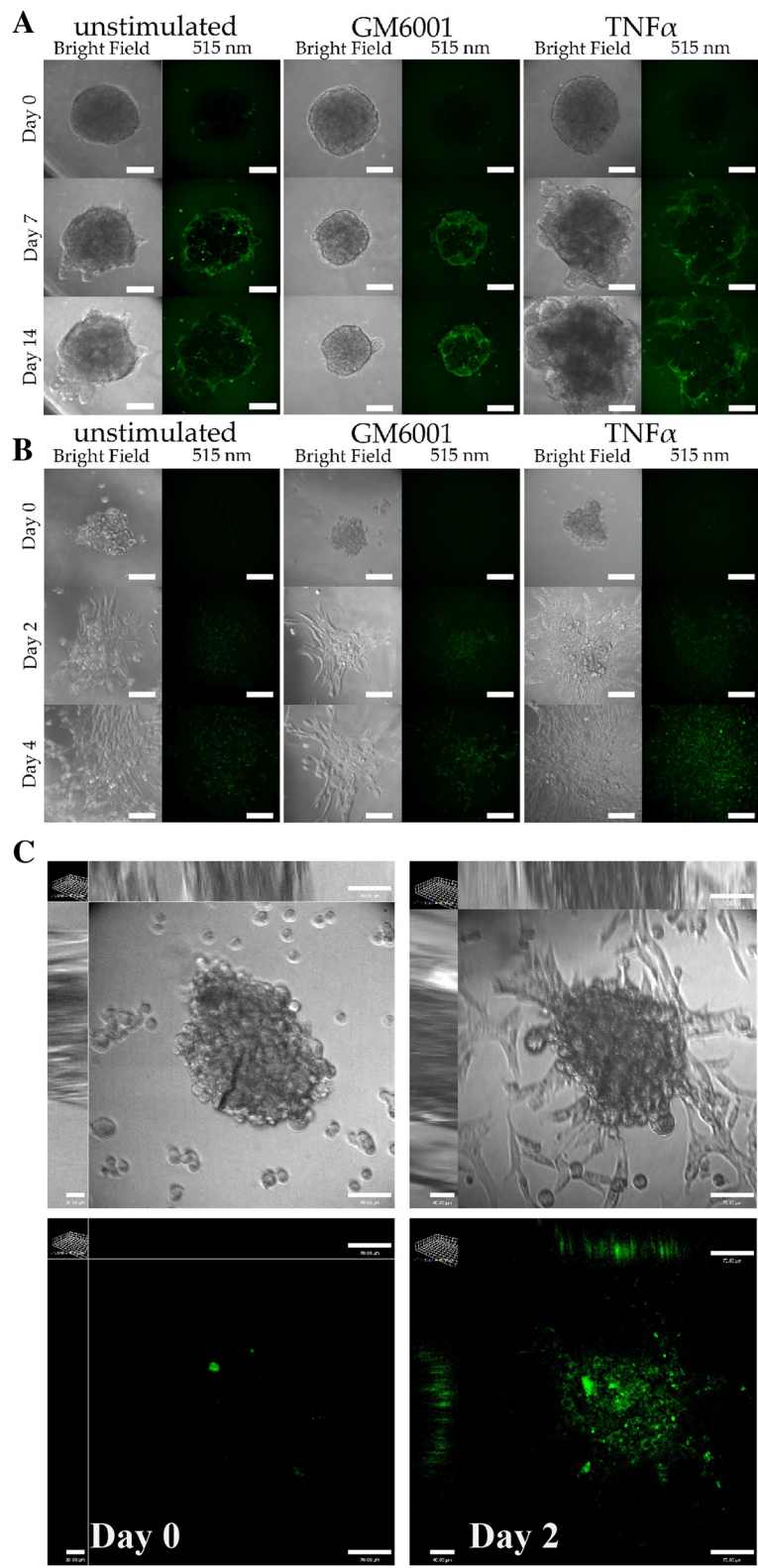


Fig. 1 Representative images of spheroid Geltrex™ degradation. Representative confocal images of UMSSC1 (a) or MDA-MB-231 (b) spheroids causing Geltrex™ degradation signalling at Day 0, 7, and 14 or Day 0, 2, and 4, respectively. Spheroid volume was revealed through bright-field imaging and Geltrex™ degradation through 488 nm excitation/515 emission. c 3D images of MDA-MB-231 cells showing both a spheroid and a background of highly invasive cells that attached to the bottom of the slides. Scale bar, 100 μ m. Images are representative of three repetitions